

AD-410 Tilting Models

MAXIMUM CAPACITY (DRY WEIGHT)		410 lbs	185.97 kg
TUMBLER DIAMETER		68-3/4"	174.63 cm
TUMBLER DEPTH		66-3/8"	168.61 cm
TUMBLER VOLUME		143 cu ft	4.049 cu m
TUMBLER/DRIVE MOTOR		7-1/2 hp	5.59 kW
BLOWER/FAN MOTOR (GAS / STEAM)		15 hp / 25 hp	11.2 kW / 18.7 kW
DOOR OPENING*		38" w x 50" h	96.52 cm x 127 cm
DOOR SILL HEIGHT		39-3/4"	100.97 cm
WATER CONNECTION**		1" F.N.P.T.	
DRYERS PER 20'/40' CONTAINER		1 / 3	
DRYERS PER 48'/53' TRUCK		3 / 4	
Gas***	VOLTAGE AVAILABLE	208-575v 3ø 3,4w 50/60 Hz	
	APPROX. NET WEIGHT	6,800 lbs	3,084.43 kg
	APPROX. SHIPPING WEIGHT	7,300 lbs	3,311.22 kg
	AIRFLOW	9,200 cfm	260.52 cmm
	HEAT INPUT	1,400,000 Btu/hr	352,794 kcal/hr
	EXHAUST CONNECTION (DIAMETER)	28"	71.12 cm
	COMPRESSED AIR CONNECTION	3/8" F.N.P.T.	
	COMPRESSED AIR VOLUME (1-WAY / 2-WAY)	5-1/2 cfh / 7 cfh	0.16 cmh / 0.2 cmh
Steam****	INLET PIPE CONNECTION****	1-1/2" F.N.P.T.	
	VOLTAGE AVAILABLE	208-575v 3ø 3,4w 50/60 Hz	
	APPROX. NET WEIGHT	6,800 lbs	3,084.43 kg
	APPROX. SHIPPING WEIGHT	7,300 lbs	3,311.22 kg
	AIRFLOW	9,200 cfm	260.52 cmm
	STEAM CONSUMPTION	1,257 lbs/hr	570.17 kg/hr
	OPERATING STEAM PRESSURE	125 psi max	8.62 bar
	EXHAUST CONNECTION (DIAMETER)	28"	71.12 cm
	COMPRESSED AIR CONNECTION	3/8" F.N.P.T.	
	COMPRESSED AIR VOLUME (1-WAY / 2-WAY)	5-1/2 cfh / 7 cfh	0.16 cmh / 0.2 cmh
	BOILER HP (NORMAL LOAD)	38	
	SUPPLY CONNECTION	2" M.N.P.T.	
RETURN CONNECTION	1-1/4" M.N.P.T.		

Shaded areas are stated in metric equivalents.

* Height is 50" (127 cm) maximum at the center of the door.

** Dryer **must be** provided with water at a pressure of 40 psi min./100 psi max. (2.8 bar min./6.9 bar max.).

*** Dryer **must be** provided with a clean, dry, regulated 80 psi ± 10 psi (5.52 bar ± 0.69 bar) air supply.

**** Gas supply line to dryer **must be** a minimum of 2". Size of piping to dryer varies with installation conditions. Contact factory for assistance.

Gas/Steam Electrical Service Specifications (Per Dryer) †

IMPORTANT: 208 VAC and 240 VAC **ARE NOT THE SAME.** When ordering, **specify exact voltage.**

NOTES: A.

Circuit breakers are thermal/magnetic (industrial) motor curve type **ONLY**. For others, calculate/verify correct breaker size according to appliance amp draw rating and type of breaker used.

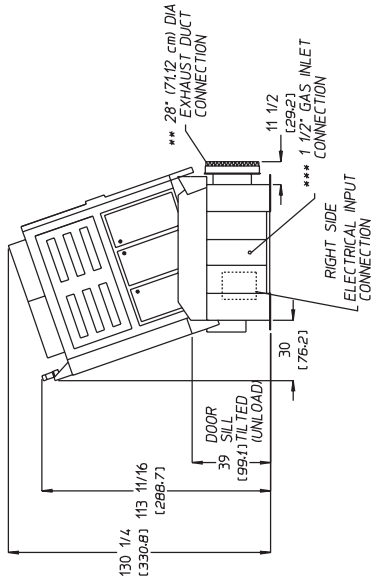
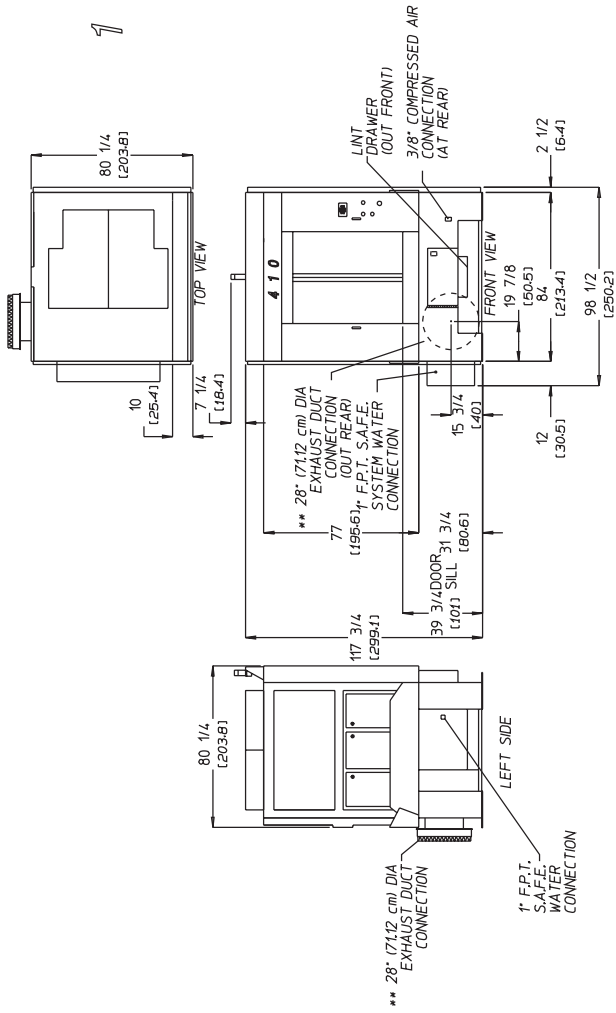
B. Circuit breakers for 3-phase (3ø) dryers **must be** 3-pole type.

SERVICE VOLTAGE	PHASE	WIRE SERVICE	APPROX. AMP DRAW				CIRCUIT BREAKER AMPERAGE	
			60 Hz		50 Hz		Gas	Steam
			Gas	Steam	Gas	Steam		
208	3ø	3/4	70	103	--	--	100	150
230	3ø	3	66	93	69	97	80 @ 60 Hz 100 @ 50 Hz	125 @ 60 Hz 150 @ 50 Hz
380-400	3ø	3/4	--	--	35	48	60	90
416	3ø	3/4	--	--	34	48	60	90
460/480	3ø	3/4	34	48	--	--	60	70
575	3ø	3/4	29	40	--	--	50	60

Specifications subject to change without notice.

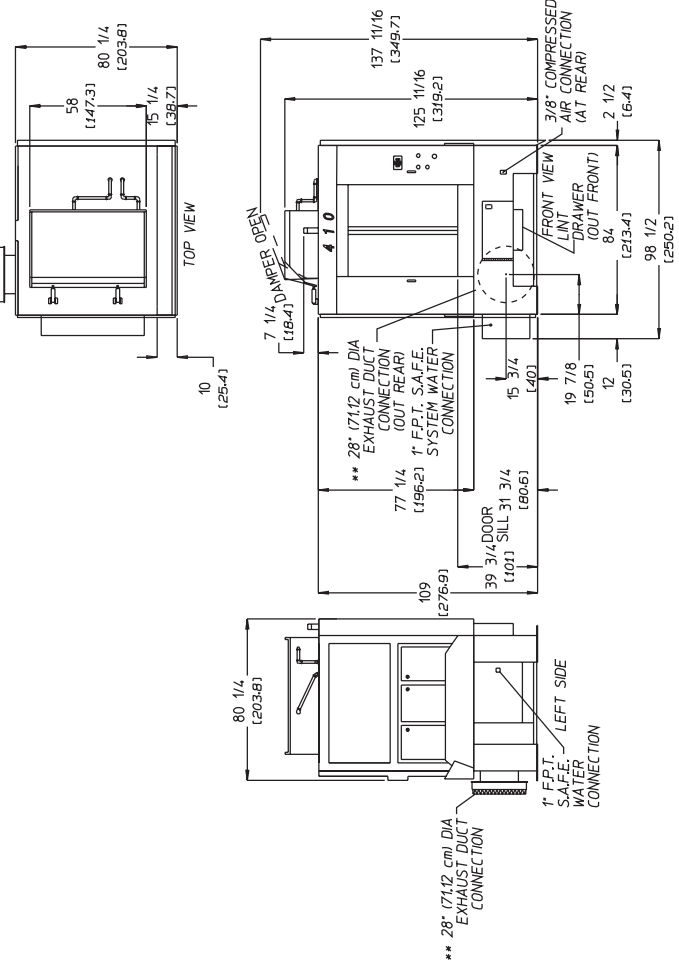


AD-410 TILTING* 1 DOOR/FORWARD TILT GAS MODEL

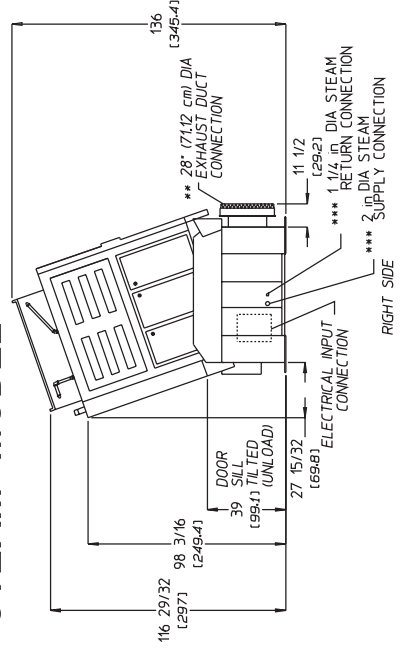


EV 9/2/04

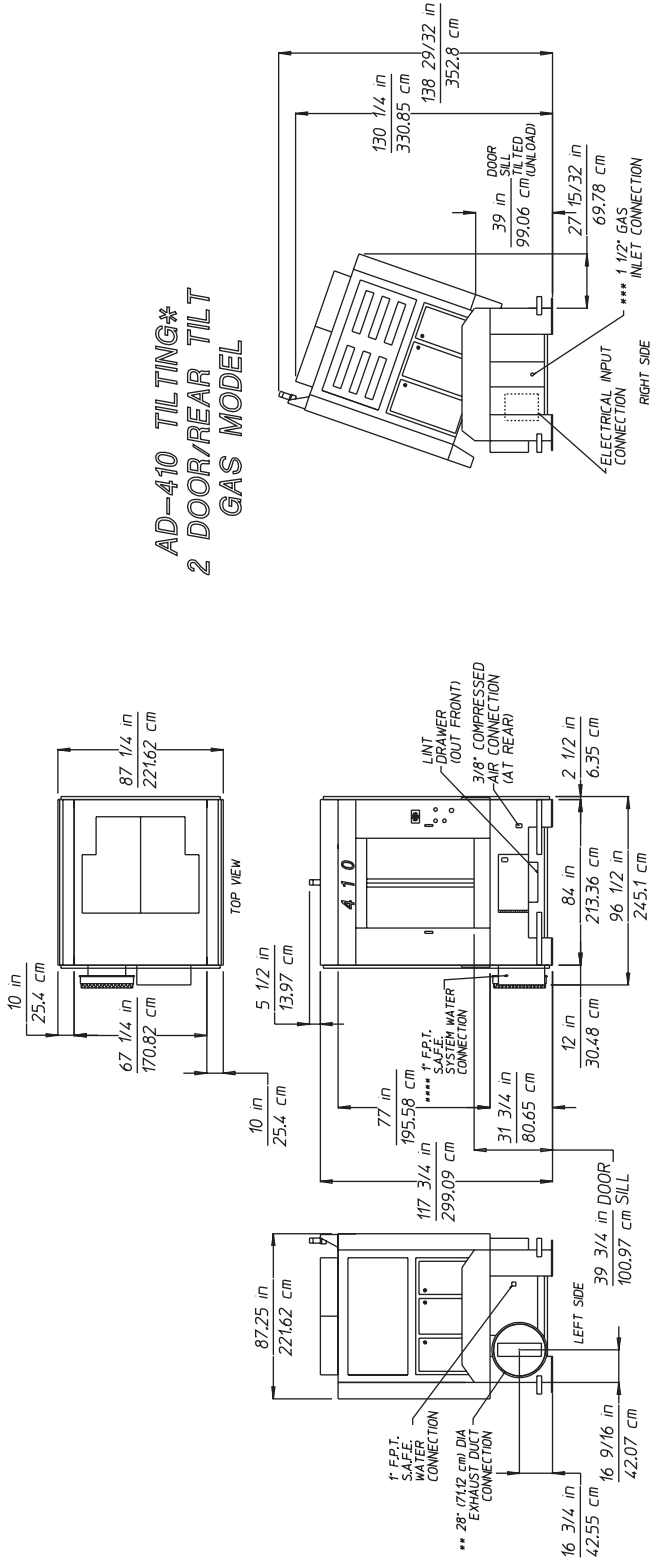
AD-410 TILTING* 1 DOOR/FORWARD TILT STEAM MODEL



* BOTH GAS AND STEAM TILTING UNITS MUST BE SUPPLIED WITH CLEAN, DRY, REGULATED AIR AT 80 PSI ± 10 PSI (5.52 BARS ± 0.69 BARS).
 ** DUCTWORK SIZE VARIES WITH INSTALLATION CONDITIONS. EXHAUST STATIC PRESSURE SHOULD NOT EXCEED 0.3" WATER COLUMN (0.74 mb).
 *** SIZE OF PIPING TO DRYER VARIES WITH INSTALLATION CONDITIONS. CONTACT FACTORY FOR ASSISTANCE.



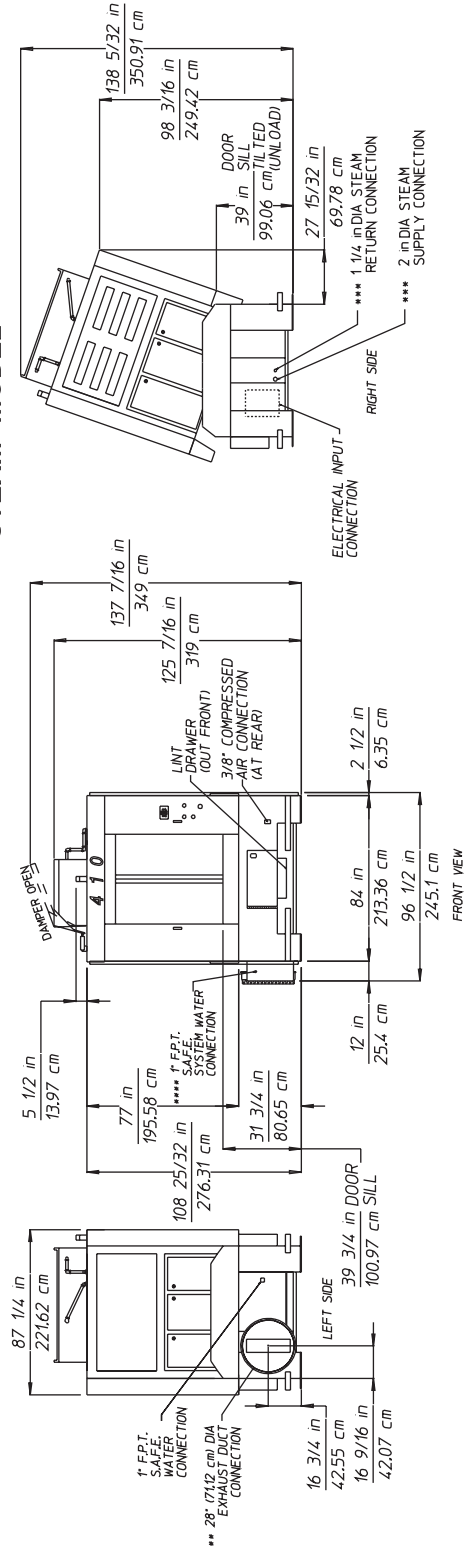
**AD-410 TILTING*
2 DOOR/REAR TILT
GAS MODEL**



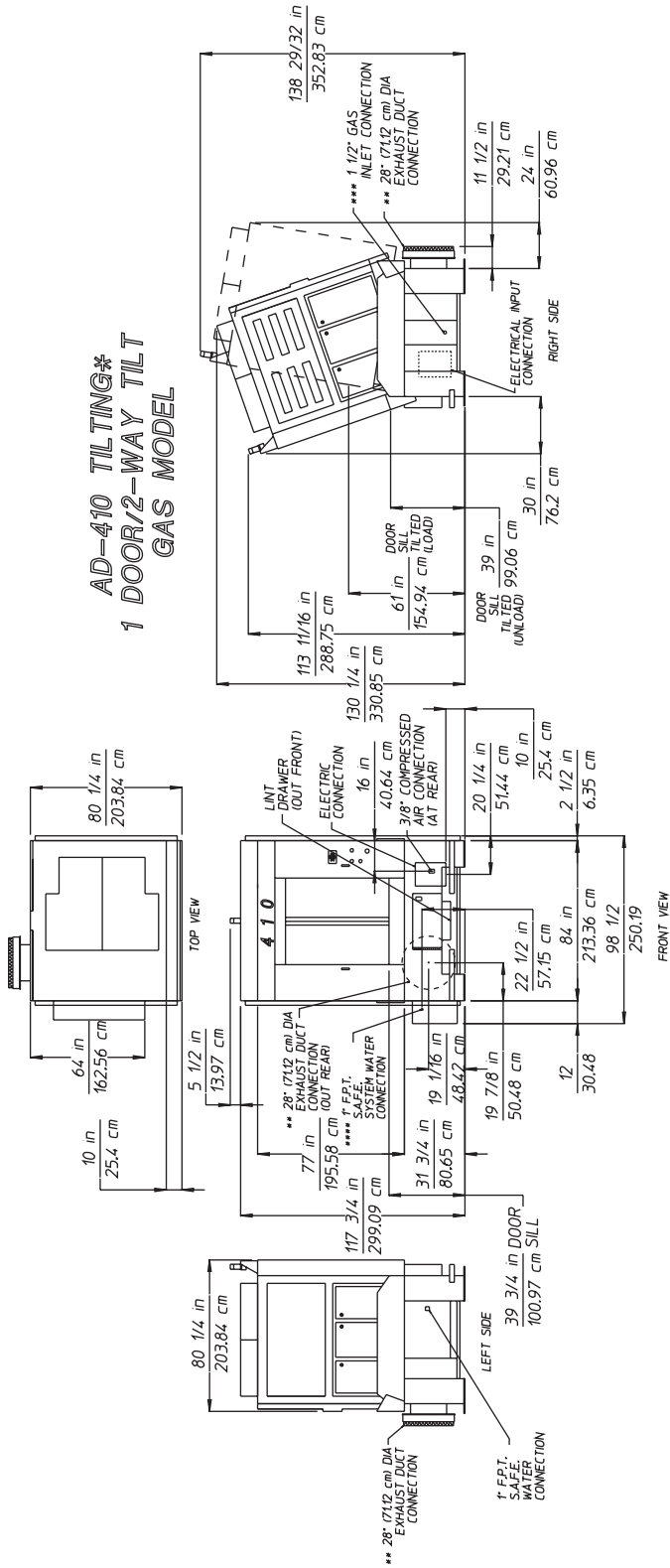
EV 9/2/04

* BOTH GAS AND STEAM TILTING UNITS MUST BE SUPPLIED WITH CLEAN, DRY, REGULATED AIR AT 80 PSI ± 10 PSI (5.52 BAR ± 0.69 BAR). ** DUCTWORK SIZE VARIES WITH INSTALLATION CONDITIONS. EXHAUST STATIC PRESSURE SHOULD NOT EXCEED 0.3" WATER COLUMN (0.72 mbi). *** SIZE OF PIPING TO DRYER VARIES WITH INSTALLATION CONDITIONS. CONTACT FACTORY FOR ASSISTANCE.

**AD-410 TILTING*
2 DOOR/REAR TILT
STEAM MODEL**



**AD-410 TILTING*
1 DOOR/2-WAY TILT
GAS MODEL**



EV 9/2/04

* BOTH GAS AND STEAM TILTING UNITS MUST BE SUPPLIED WITH CLEAN, DRY, REGULATED AIR AT 80 PSI ± 10 PSI (5.52 BARS ± 0.69 BARS).
 ** STEAM TILTING UNITS MUST BE SUPPLIED WITH STEAM AT 100 PSI (6.89 BARS).
 *** STEAM PRESSURE SHOULD NOT EXCEED 0.3 WATER COLUMN (0.74 mb).
 **** SIZE OF PIPING TO DRYER VARIES WITH INSTALLATION CONDITIONS.
 ***** CONTACT FACTORY FOR ASSISTANCE.

**AD-410 TILTING*
1 DOOR/2-WAY TILT
STEAM MODEL**

