

ADC AD-25V

25-lb Capacity OPL Dryer

Standard Features:

- 25-lb. capacity
- 9.26 cu. ft. volume
- 78,000 Btu/hr heat input and 460 cfm
- Modular heat source
- Radial airflow
- Steel door with gasketless glass
- Self diagnostic microprocessor with patented auto drying feature
- Easy access to lint compartment
- Fits through a standard 30" door opening
- Available in gas, steam and electric heat

Optional Features:

- Stainless steel front, cabinet & basket
- Reversing basket
- S.A.F.E. (Sensor Activated Fire Extinguishing System)

Why Purchase ADC AD-25V?

Engineer Driven Design That is Built to Last

Our dryers showcase ADC's engineer-driven approach to design. Bearings are permanently lubricated on the motor and drive system. There are no chains used at ADC; rather, we use V-belts and pulleys for smooth, quiet, and trouble free operation. Our dryer cabinets are electrostatically powder-painted inside and out then baked at 420-degrees fahrenheit before final assembly - ensuring the hardest surface and the longest lasting finish in the industry.

Rugged Steel Door with Gasketless Door Glass

Our dryer doors are one solid piece of steel with gasketless glass. This eliminates the issue of glass falling out due to wear and tear on rubber gaskets that some manufacturers use to secure their glass. The security and durability that gasketless glass provides is essential to a successful laundromat operation.

Easy-to-Read, Multilingual Controls

We were the first to bring computer operated dryers to the market and today we continue to be a leader in applying technology to dryer operation. Our years of experience along with our accessible design, easy-to-read LED screens and our user friendly multilingual interface positions ADC as the pioneer in the laundry industry.

Your local ADC independent authorized distributor



AD-25V OPL Dryer

ADC AD-25V

AD-25V Specifications

Tumbler Capacity (dry weight)	25 lbs. (11.3 kg)																
Tumbler Diameter	32-3/4" (83.2 cm)																
Tumbler Depth	19" (48.3 cm)																
Tumbler Volume	9.26 cu ft (262.2 L)																
Tumbler/Drive Motor	1/2 hp* (0.373 kW)																
Blower/Fan Motor	N/A																
Door Opening (Diameter)	21-1/2" (54.61 cm)																
Door Sill Height	31" (78.74 cm)																
S.A.F.E. Water Connection	3/4"-11.5 NH (North America) 3/4" B.S.P.T. (Outside North America)																
Dryers per 20'/40' Container	14 / 30																
Dryers per 48'/53' Truck	45 / 51																
Width	34-1/4" (87 cm)																
Depth	29-3/4" (75.6 cm)																
Height	72" (182.9 cm)																
Airflow	60 Hz	460 cfm (13 cmm)															
gas/electric/steam	50 Hz	383 cfm (10.85 cmm)															
Exhaust Connection	8" (20.32 cm)																
GAS MODEL:	Approx. Net Wt.	407 lbs (184.6 kg)															
	Approx. Ship Wt.	446 lbs (202.1 kg)															
	Heat Input	78,000 btu/hr (19,656 kcal/hr)															
	Inlet Pipe Connection	1/2" M.N.P.T. ** 1/2" B.S.P.T. (CE and Australia Only)															
ELECTRICAL MODEL:	Approx. Net Wt.	407 lbs (184.6 kg)															
	Approx. Ship Wt.	446 lbs (202.1 kg)															
	<table border="1"> <thead> <tr> <th colspan="3">Oven Size per pocket</th> </tr> <tr> <th>kW</th> <th>Btu/hr (kcal/hr)</th> <th></th> </tr> </thead> <tbody> <tr> <td>15</td> <td>51,200 (12,900)</td> <td></td> </tr> <tr> <td>20</td> <td>68,200 (17,200)</td> <td></td> </tr> <tr> <td>24</td> <td>81,900 (20,600)</td> <td></td> </tr> </tbody> </table>		Oven Size per pocket			kW	Btu/hr (kcal/hr)		15	51,200 (12,900)		20	68,200 (17,200)		24	81,900 (20,600)	
Oven Size per pocket																	
kW	Btu/hr (kcal/hr)																
15	51,200 (12,900)																
20	68,200 (17,200)																
24	81,900 (20,600)																
STEAM MODEL:	Approx. Net Wt.	435 lbs (197.3 kg)															
	Approx. Ship Wt.	474 lbs (214.8 kg)															
	Steam Consumption	98.8 lb/hr (44.8 kg/hr)															
	Operating Steam Pressure	125 psi max (8.6 bar)															
	Exhaust Connection (Diameter)	8" (20.32 cm)															
	Boiler Horsepower (Normal Load)	2.9 Bhp															
	Compressed Air Volume	0.75 cfh (0.02 cmh)															
	Supply Connection	1" F.N.P.T.															
	Return Connection	1" F.N.P.T.															

Specifications in parentheses are metric equivalents.

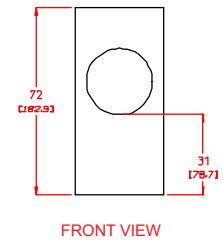
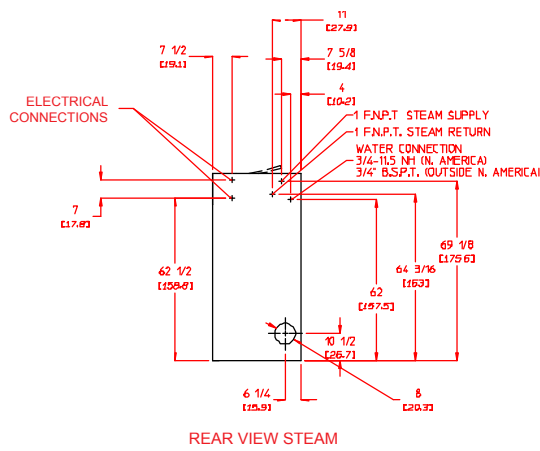
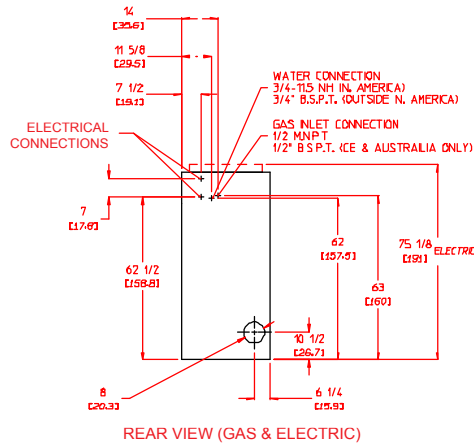
1/2/04

* Reversing dryer available with 3-phase (3ø) 1/2 hp (0.373 kW) motors standard.

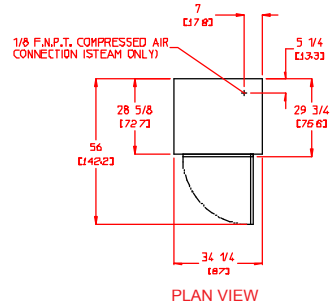
**Size of piping to dryer varies with installation conditions. Contact factory for assistance.

***Specify air-operated or electromechanical steam damper system. Air-operated steam damper system must be provided with clean, dry, and regulated 80 psi ±10psi (5.52 bar ±0.68 bar) air supply.

Electrical Service Specifications					
SERVICE VOLTAGE	PHASE	WIRE SERVICE	APPROX AMP DRAW		CIRCUIT BREAKER
			60 Hz	50 Hz	
20 kW Electric					
208	1ø	2	101	--	150
220	1ø	2	96	--	125
230	1ø	2	92	--	125
240	1ø	2	--	89	125
208	3ø	3	62	--	80
380	3ø	4*	--	34	45
24 kW Electric					
208	3ø	3	72	--	90
220	3ø	3	66	--	90
230	3ø	3	65	--	90
240	3ø	3	--	63	80
380	3ø	4*	--	42	60
416	3ø	4*	--	39	50



Electrical Service Specifications					
SERVICE VOLTAGE	PHASE	WIRE SERVICE	APPROX AMP DRAW		CIRCUIT BREAKER
			60 Hz	50 Hz	
GAS & STEAM (non-reversing)					
100	1ø	2	8.0	9.4	15
115	1ø	2	8.7	--	15
208	1ø	2	5.2	--	15
220	1ø	2	4.8	3.8	15
240	1ø	2	--	5.6	15
208	3ø	3	3.0	--	15
230	3ø	3	3.3	4.2	15
240	3ø	3	3.2	3.6	15
380	3ø	4*	--	2.2	15
400	3ø	4*	--	2.3	15
416	3ø	3	--	2.3	15
460	3ø	3	2.1	--	--
480	3ø	3	2.1	--	15
GAS & STEAM (reversing)					
208	3ø	3	5.0	5.0	5.0
220	3ø	3	--	--	--
240	3ø	3	5.6	5.6	5.6
380	3ø	4*	--	--	--
400	3ø	4*	--	--	--
416	3ø	4*	--	3.6	15



web-only document 10/10

88 Currant Road Fall River, MA 02720-4781 • 508.678.9000 • Fax: 508.678.9447 • Email: sales@amdry.com

www.amdry.com